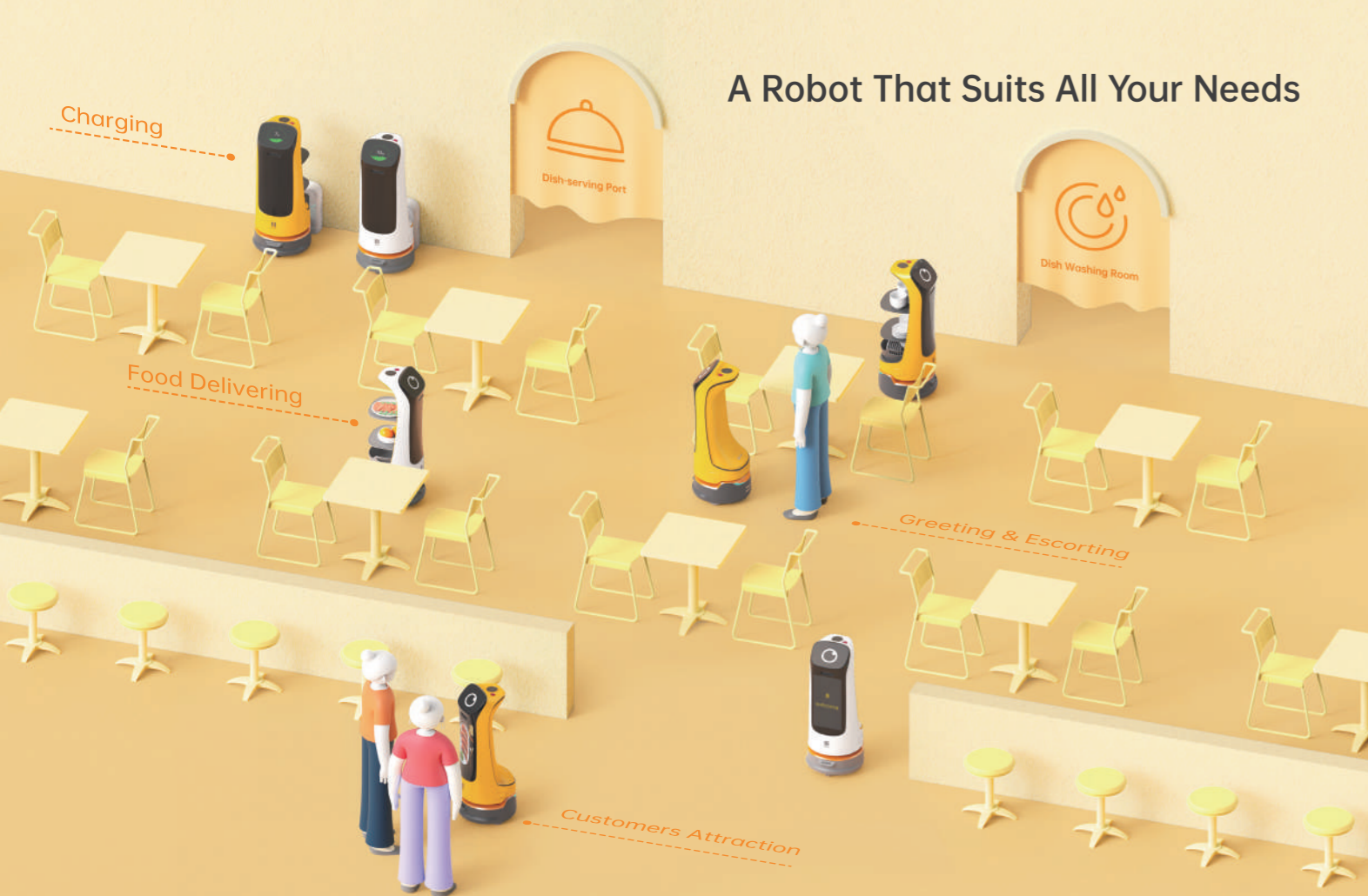


A Robot That Suits All Your Needs



[2] The docking station needs to be purchased additionally.

Founded in 2016 and headquartered in Shenzhen, Pudu Robotics is a national high-tech enterprise dedicated to the design, R&D, production and sales of commercial service robots. The company has set up R&D centers in Shenzhen and Chengdu, and hundreds of after-sales service centers across the globe.

Powered by the core technologies of positioning and navigation, motion control, multiple-robot dispatching, obstacle detection and avoidance, NVH, intelligent interaction and automated simulation testing, Pudu Robotics has developed more than 600 patents and top-notch delivery robots, disinfection robots as well as delivery & reception robot with an Ad display. As a world-leading provider of commercial service robots, Pudu Robotics has sold tens of thousands of robots to more than 60 countries and regions around the world. The robots are widely used in restaurants, hospitals, schools, office buildings, government halls, subway stations, waiting rooms, etc.

In July 2020, Pudu Robotics obtained series B financing totaling more than \$15 million exclusively invested by Meituan. In August, it obtained series B+ financing totaling around \$15 million yuan, which was led by Sequoia Capital China. In May 2021, Pudu Robotics completed series C financing of \$75 million, a joint investment by Tencent, Meituan and Sequoia Capital China.



SHENZHEN PUDU TECHNOLOGY CO., LTD.

www.pudurobotics.com

global_sales@pudutech.com

400-0826-660

Room 501, Building 1A, Shenzhen International Inno Valley Phase 1, Dashi 1st Road, Nanshan District, Shenzhen, China



KettyBot

Delivery & Reception Robot with an Ad Display





Superior Mobility



Customized Advertisement



Customer Attraction



Greeting & Escorting



AI Voice Interaction



Multiple Delivery Modes



Automatic Recharging

Machine dimension:	451×436×1103mm
Machine weight:	38kg
Carrying capacity:	30kg
Battery life:	>8h
Charging time:	4.5h
Clearance:	≥55cm
Cruise speed:	Max 1.2m/s
Ad display dimension:	18.5"



AI Voice Interaction

The new voice interaction module integrates exclusive situational dialogues with cutting-edge echo cancellation, noise suppression, and reverberation elimination technology.



Two Forms for Greater Versatility

The removable rear cover¹ of KettyBot features a minimalist, streamlined design that makes it more compact. Together with two trays and the collecting box at the bottom, KettyBot satisfies all your needs in one go.



[1]The rear cover needs to be purchased additionally.

Intelligent Color Display

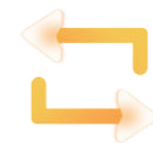
The 18.5" large ad screen can display promotional materials in the customized zone, providing a more eye-catching approach for marketing.



Multiple Delivery Modes



Multi-table Delivery



Cruise Mode



Birthday Mode



Autonomous Navigation Planning

Laser & visual dual navigation solution guarantees the obstacle detection accuracy, making the robot safer.



Multi-robot Cooperation

Powered by PUDU SCHEDULER system, KettyBot can directly communicate with any robot in the same network.